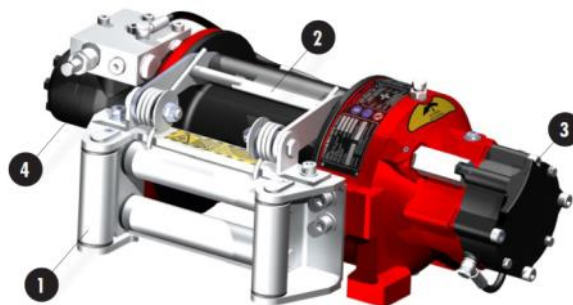


FEATURES

- Compact: Hardened steel single stage planetary gear train
- Fast winching speed: Fast payout and rewind
- Versatile mounting: Designed for either foot or side mounting
- Light and strong: Body manufactured from hardened, special aluminium castings reduced weight and increased strength Powder coat finished
- Heavy-duty automatic disc brake: Gives a reliable and effective brake capacity

COMPONENTS

1. **Heavy-duty roller fairlead (Option):** Heavy duty mounting frame with zinc plated finish. Close tolerance machining, for perfect mounting onto winch body. Large diameter rollers, manufactured from hardened thick walled steel and fitted with heavy-duty composite bushing, for reduced maintenance and increased rope life.
2. **Cable tensioner (Option):** Strong frame with heavy duty springs, zinc plated finish with roller in composite against rust, prevents wire rope tangling when free spooling.
3. **Manual clutch:** Manual clutch for drum free spooling.
4. **Hydraulic motor:** Orbital hydraulic motor, splined output shaft. Painted finish.
5. **Heavy-duty automatic brake:** Automatic brake, designed using special heavy duty components to assure excellent brake performance and reliability.
6. **Overcentre valve:** Special noiseless overcentre valve based on Vime's design for low profile hoses connection, as optional.
7. **Air clutch (Option):** New compact air - cylinder with aluminium body based on Vime's own design. Can easily replace the manual clutch shifter in situ. Chromium plated output shaft is visible when the drum is in the disengaged position
8. **Drum:** It has a single or double system for wire rope mounting. The dual rope anchor point based on Vime's own design in according with CE Machinery Directive to prevent rope release, depending on wire rope diameter according to the different winch models.



BASE MODEL

CODE	TYPE	LINE PULL		ROTATION *	
		(kg)	(lb)	A	B
EPHX7200FN	Planetary - Manual clutch	7200	15,000	CW	ACW
EPHX7200AFN	Planetary - Air clutch	7200	15,000	CW	ACW
X = Rotation		* Direction of rotation viewed from motor end			

OPTIONS

CODE	TYPE
RF/EPH5200	Heavy-duty roller fairlead
LW/EPH	Level winder
AK/EPH	Air Shifter Kit
B2070/12 mmx35 m/EPH	Wire rope (12 mm x 35 m)

TECHNICAL DATA mod EPH7200FN

RATIO	WIRE ROPE SIZE	LAYER	LINE PULL
	(mm)		(kg)
5,3:1	13	1	7200
		2	5.870
		3	4.960
		4	4.290
		5	3.780

OIL SUPPLY (L/min)	DRUM REVOLUTION (rpm)	LINE SPEED (m/min)				
		LAYERS				
		1°	2°	3°	4°	5°
40	16,2	5,2	6,4	7,5	8,7	9,9
50	20,3	7,3	9,0	10,6	12,3	14,0
60	24,4	8,8	10,8	12,8	14,8	16,8

STANDARD DRUM EPH-252 mm

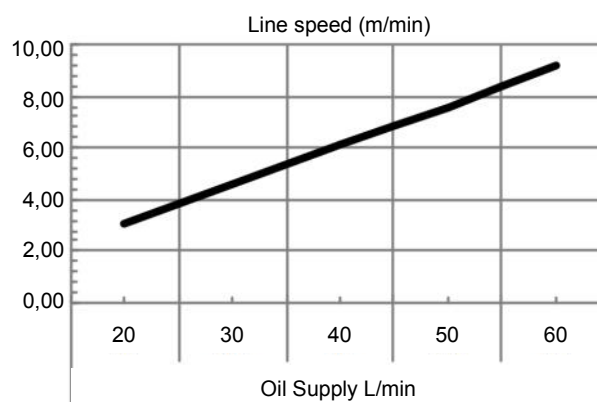
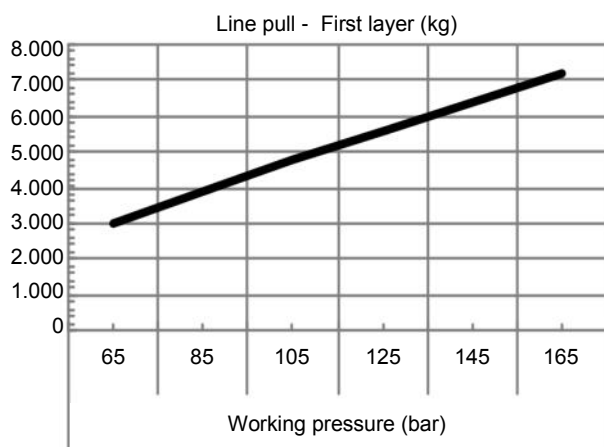
LAYER	DRUM DIAMETER		QUANTITY ON LAYER	WIRE ROPE QUANTITY
			(m)	(m)
	Ø mm		13 mm	13 mm
5	219	-	12,6	48,2
4	193	-	11,1	35,6
3	167	-	9,6	24,4
2	141	-	8,1	14,8
1	115	-	6,6	6,6
0	102	-	-	-

WIRE ROPE CAPACITY	MAX. WIRE ROPE CAPACITY
(m)	(m)
13 mm	13 mm
30	45

DESCRIPTION	WEIGHTS
	(kg)
Winch (without cable)	57,9
Accessory: Roller Fairlead	10,3
Accessory: Cable Tensioner	2

NOTE: Specifications are subject to change without notification and without incurring obligation.
Specifications in this publication are theoretical and may vary depending on hydraulic system, environment etc.

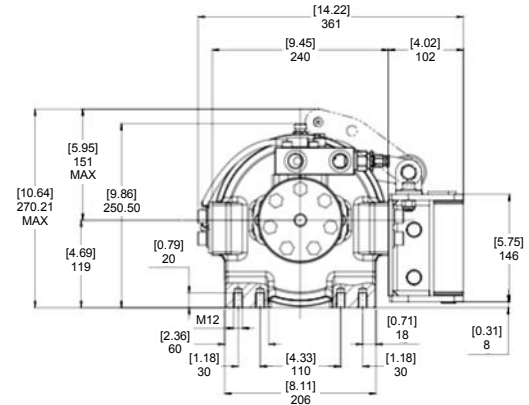
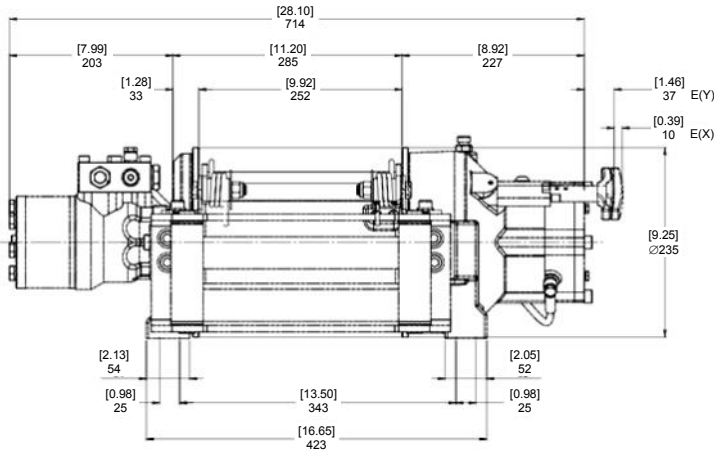
PERFORMANCE CHARTS AT THE 1ST LAYER mod. EPH7200FN



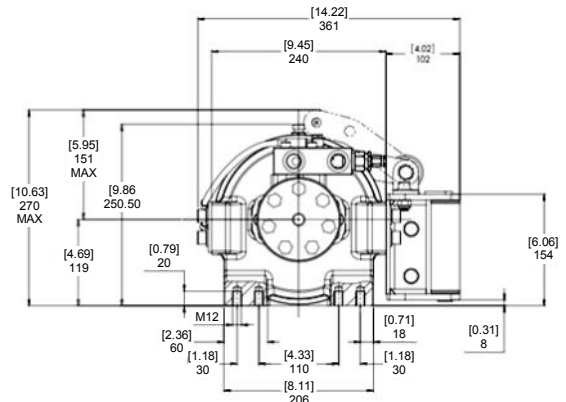
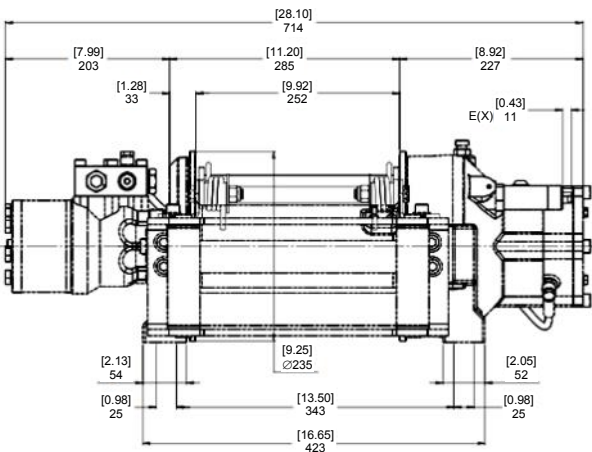
DIMENSIONAL DATA mod. EPH7200FN

DIMENSIONS: (inch)
mm

MANUAL CLUTCH SHIFTER



AIR-CYLINDER CLUTCH SHIFTER



SPECIFICATIONS mod. EPH7200FN

- **Rated line pull (1st layer):**
EPH7200FN - 7.200 kg.
- **Orbital hydraulic motor:**
EPH7200FN - 400 cc
Working pressure: 160 bar
- Hardened steel one stage planetary gear train with automatic safety brake oil bathed
Gear ratio : 5,3:1
- **Drum free spooling:**
Manual clutch (standard)
Air clutch (on request) min. 6 bar max. 10 bar
- **Drum length**
EPH7200FN: 252 mm / 9,92 inch
Drum diameter: 102 mm / 4,02 inch
- **Accessories:**
Heavy duty galvanized roller fairlead
Galvanized level winder
Over-centre valve (Standard)
- **Weight without cable:**
EPH7200FN 58 kg
- **Compliance:** CE Machinery Directive 98/37/EEC

⚠ DANGEROUS Do not use winch to lift support or otherwise transport personnel.