

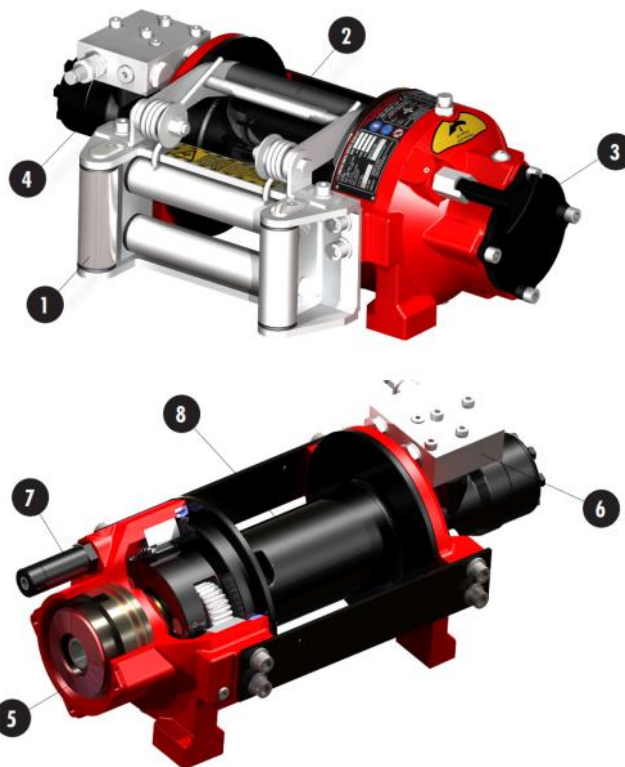


FEATURES

- Compact: Hardened steel single stage planetary gear train
- Fast winching speed: Fast payout and rewind
- Versatile mounting: Designed for either foot or side mounting
- Light and strong: Body manufactured from hardened, special aluminium castings reduced weight and increased strength Powder coat finished
- Heavy-duty automatic disc brake: Gives a reliable and effective brake capacity

COMPONENTS

1. **Heavy-duty roller fairlead (Option):** Heavy duty mounting frame with zinc plated finish. Close tolerance machining, for perfect mounting onto winch body. Large diameter rollers, manufactured from hardened thick walled steel and fitted with heavy-duty composite bushing, for reduced maintenance and increased rope life.
2. **Cable tensioner (Option):** Strong frame with heavy duty springs, zinc plated finish with roller in composite against rust, prevents wire rope tangling when free spooling.
3. **Manual clutch:** Manual clutch for drum free spooling.
4. **Hydraulic motor:** Orbital hydraulic motor, splined output shaft. Painted finish.
5. **Heavy-duty automatic brake:** Automatic brake, designed using special heavy duty components to assure excellent brake performance and reliability.
6. **Overcentre valve:** Special noiseless overcentre valve based on Vime's design for low profile hoses connection, as optional.
7. **Air clutch (Option):** New compact air - cylinder with aluminium body based on Vime's own design. Can easily replace the manual clutch shifter in situ. Chromium plated output shaft is visible when the drum is in the disengaged position
8. **Drum:** It has a single or double system for wire rope mounting. The dual rope anchor point based on Vime's own design in according with CE Machinery Directive to prevent rope release, depending on wire rope diameter according to the different winch models.



BASE MODEL

CODE	TYPE	LINE PULL		ROTATION *	
		(kg)	(lb)	A	B
EPHX5200	Planetary - Manual clutch	5,200	12,000	CW	ACW
EPHX5200A	Planetary - Air clutch	5,200	12,000	CW	ACW
X = Rotation		* Direction of rotation viewed from motor end			

OPTIONS

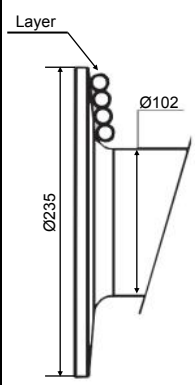
CODE	TYPE
RF/EPH5200	Heavy-duty roller fairlead
LW/EPH	Level winder
AK/EPH	Air Shifter Kit
B2070/12MMX35MT/EH	Wire rope (12 mm x 35 m)

TECHNICAL DATA mod EPH5200

RATIO	WIRE ROPE SIZE	LAYER	LINE PULL
	(mm)		(kg)
5,3:1	12	1	5.200
		2	4.295
		3	3.660
		4	3.185
		5	2.820

OIL SUPPLY	DRUM REVOLUTION	LINE SPEED (m/min)				
		LAYERS				
(L/min)	(rpm)	1	2	3	4	5
40	14,4	5,1	6,1	7,1	8,1	9,1
50	20,3	7,2	8,6	10,0	11,4	12,8
60	24,4	8,6	10,3	12,0	13,7	15,4

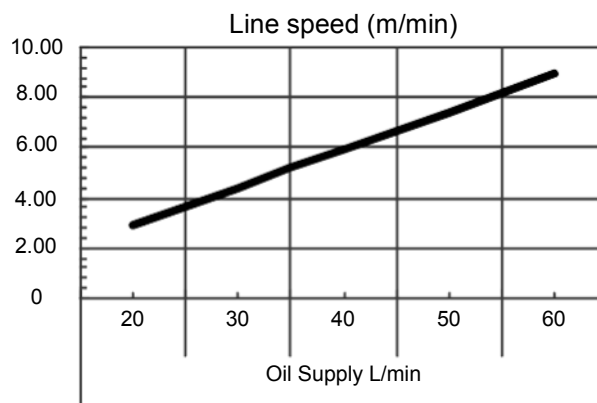
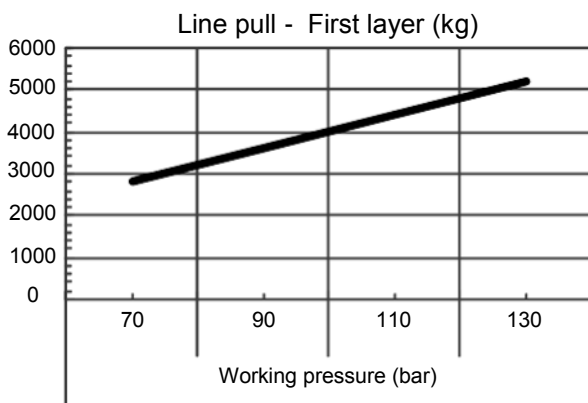
STANDARD DRUM EPH=252 mm

	LAYER	DRUM DIAMETER		QUANTITY ON LAYER	WIRE ROPE QUANTITY
				(m)	(m)
		Ø mm		12 mm	12 mm
	5	210	-	13,2	50,9
	4	186	-	11,7	37,7
	3	162	-	10,2	26,0
	2	138	-	8,7	15,8
	1	114	-	7,2	7,2
	0	102	-	-	-

DRUM	WEIGHT WITHOUT CABLE	WIRE ROPE CAPACITY	MAX. WIRE ROPE CAPACITY
		(m)	(m)
	(kg)	12 mm	12 mm
Standard EPH	55	30	45

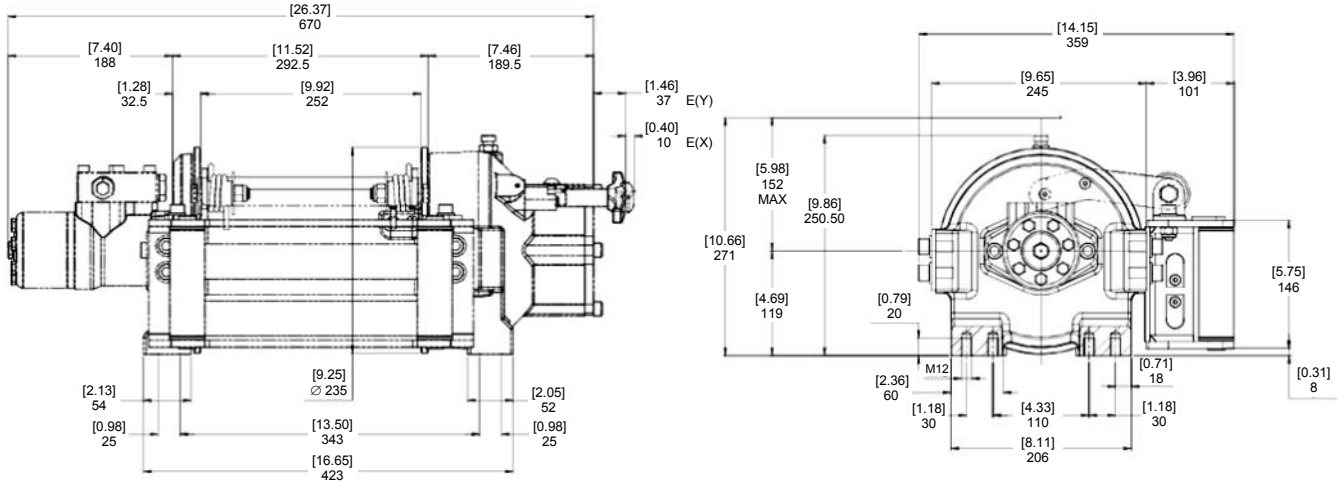
NOTE: Specifications are subject to change without notification and without incurring obligation. Specifications in this publication are theoretical and may vary depending on hydraulic system, environment etc.

PERFORMANCE CHARTS AT THE 1ST LAYER mod. EPH5200

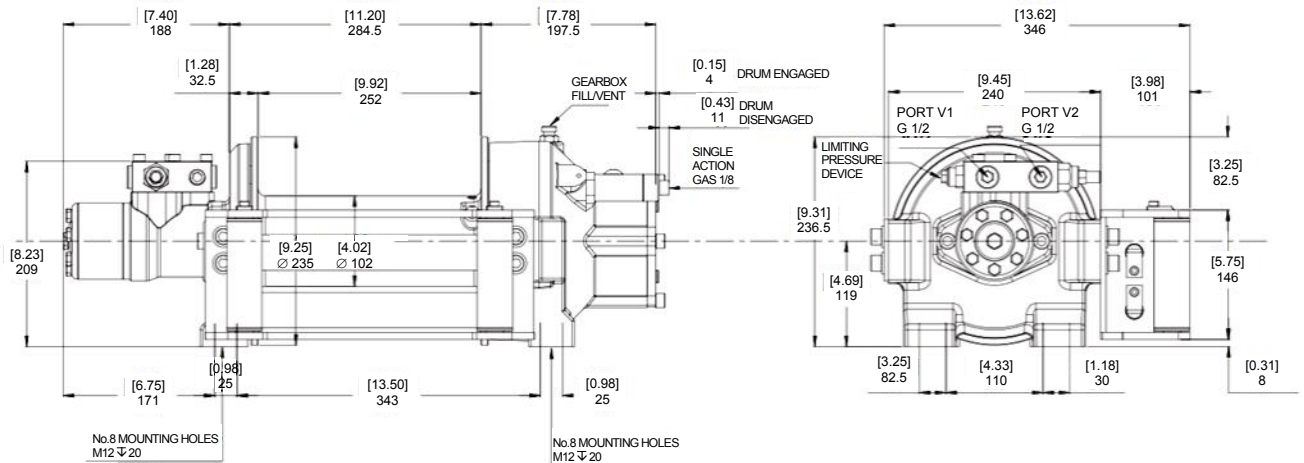


DIMENSIONAL DATA mod. EPH5200

DIMENSIONS: [inch]
mm



AIR-CYLINDER CLUTCH SHIFTER



SPECIFICATIONS mod. EPH5200

- **Rated line pull (1st layer):**
EPH 5.200 kg
- **Orbital hydraulic motor:**
EPH5200 - 400 cc
Working pressure: EPH5200 - 130 bar
- Hardened steel one stage planetary gear train with automatic safety brake oil bathed
Gear ratio : 5,3:1
- **Drum free spooling:**
Manual clutch (standard)
Air clutch (on request) min. 6 bar max. 10 bar
- Over-centre valve with limiting pressure device
- **Drum length**
Drum length: 252 mm / 9,92 inch
Drum diameter: 102 mm / 4,02 inch
- **Accessories:**
Heavy duty galvanized roller fairlead
Galvanized level winder
- **Weight without cable:**
EPH5200 49 kg
- **Compliance:** CE Machinery Directive 98/37EEC

⚠ DANGEROUS Do not use winch to lift support or otherwise transport personnel.